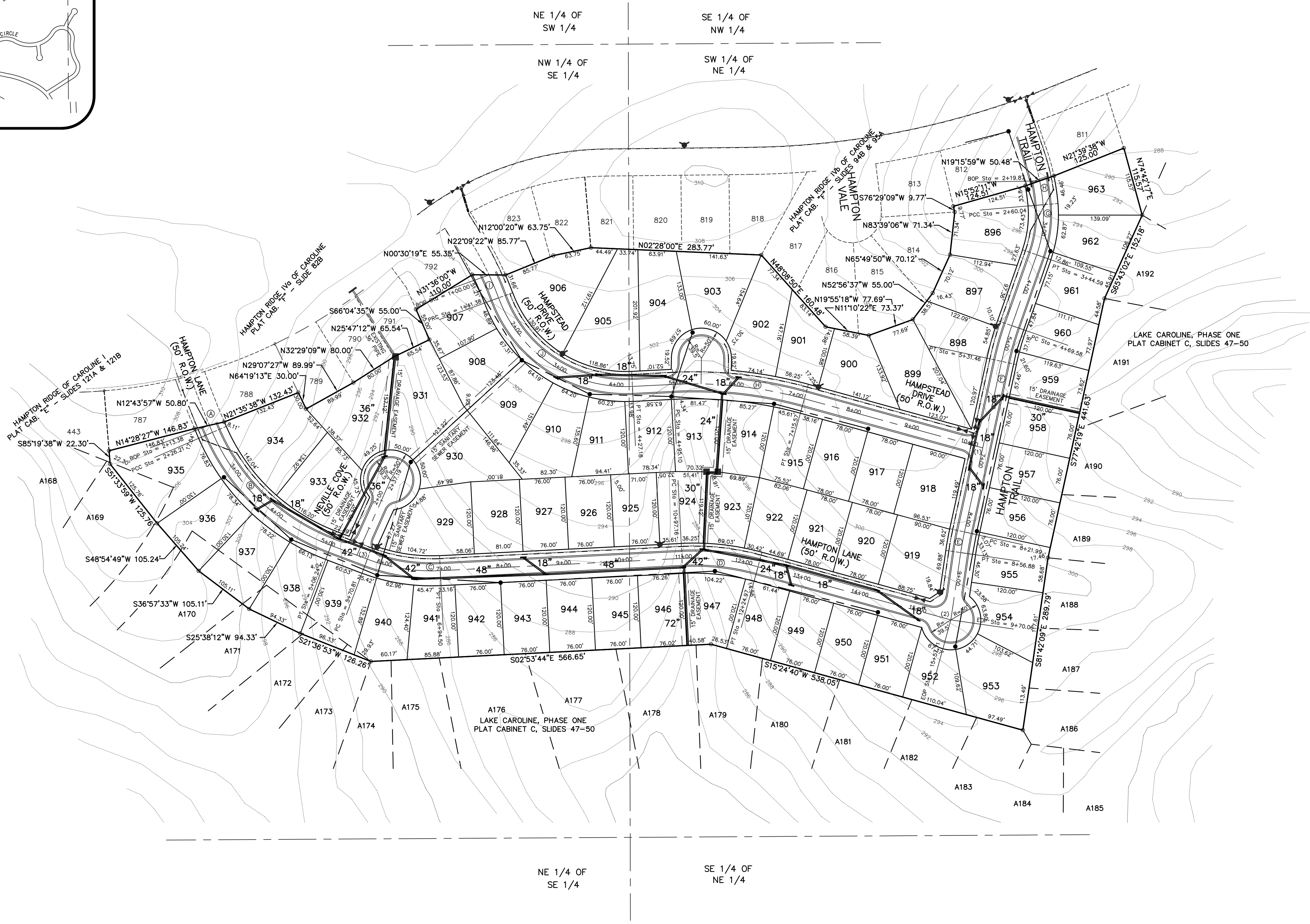


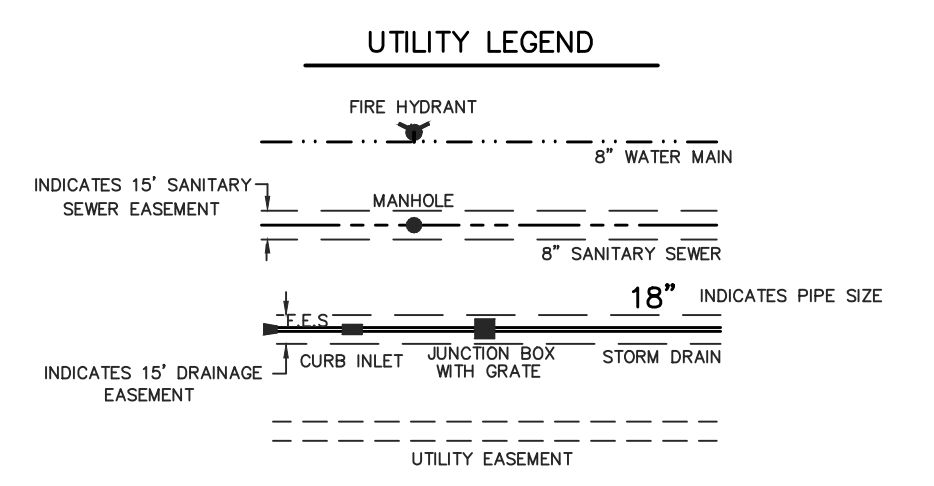
**CURB AND GUTTER NOTES:**  
 1. 1/2" EXPANSION JOINT AT 30' INTERVALS.  
 2. 1/4" CONTRACTION JOINT AT 10' INTERVALS (1/4" WIDE X 1-1/2" DEEP).  
 3. ALL CURB & GUTTER AND DRIVEWAYS TO BE CONSTRUCTED OF 3500 PSI CONCRETE.



**RIGHT-OF-WAY CURVE DATA**

△ = 00°29'24" D = 3.81972' R = 1500.00' L = 12.83'	△ = 45°50'29" D = 16.37022' R = 350.00' L = 280.03'	△ = 23°37'18" D = 19.08859' R = 300.00' L = 123.68'	△ = 18°18'24" D = 14.32395' R = 400.00' L = 127.80'
△ = 03°59'50" D = 11.45916' R = 500.00' L = 34.88'	△ = 07°05'29" D = 11.45916' R = 500.00' L = 61.88'	△ = 24°13'12" D = 26.64789' R = 200.00' L = 84.54'	△ = 06°34'36" D = 16.37022' R = 350.00' L = 40.17'
△ = 04°44'32" D = 11.45916' R = 500.00' L = 41.38'	△ = 72°46'42" D = 25.46479' R = 225.00' L = 285.80'	△ = 18°18'24" D = 8.30374' R = 690.00' L = 220.46'	

- CENTERLINE INTERSECTIONS**
- STA. 6+78.83 HAMPTON TRAIL = STA. 10+23.40 HAMPTON DRIVE
  - STA. 9+70.06 HAMPTON TRAIL = STA. 15+57.71 HAMPTON LANE
  - STA. 5+52.32 HAMPTON LANE = STA. 1+00 NEVILLE COVE



- NOTES:**
- THIS SUBDIVISION LIES WITHIN THE LIMITS ESTABLISHED FOR ZONE "X" (NO SHADING) ACCORDING TO FIRM MAP NUMBER 280860395 F, EFFECTIVE MARCH 17, 2010.
  - DIMENSIONS ALONG CURVES ARE CHORD DISTANCES.
  - AREA = 20.05 ACRES +/-, MORE OR LESS.
  - CONCRETE MONUMENTS WILL BE PLACED AT ALL CORNERS OF THE SUBDIVISION POST-CONSTRUCTION.
  - COMMON AREAS AND EASEMENTS SHALL BE MAINTAINED BY THE HOME OWNERS ASSN. OR ADJACENT LOT OWNER, WHICHEVER IS APPLICABLE AS OUTLINED IN THE COVENANTS.
  - DATE OF FIELD SURVEY: 12-21-17
  - CONTOURS SHOWN ARE FROM AERIAL MAPPING (NAVD 88 DATUM).

**DEVELOPER**  
**CAROLINE LLC**  
 607 HIGHLAND COLONY PARKWAY, SUITE 300  
 MADISON, MISSISSIPPI 39110

**PROJECT**  
 PRELIMINARY PLAT  
 OF  
**HAMPTON RIDGE V OF CAROLINE**

**LOCATION**  
 BEING A PART OF LOTS A169, A170, A171, A172 AND A173  
 AND ALSO A CERTAIN PARCEL OF LAND SITUATED IN THE  
 SW 1/4 OF THE NE 1/4, THE NW 1/4 OF THE SE 1/4  
 OF SECTION 11, TOWNSHIP 8 NORTH - RANGE 1 EAST  
 MADISON COUNTY, MISSISSIPPI

**DATE** 02-07-18  
**REVISION** COUNTY COMMENTS  
**BY** JBH

**DRAWN BY:** D.L.M.  
**DATE:** 1-11-18  
**SCALE:** 1" = 100'  
**PROJECT NO.:** 00-199

**H D LANG AND ASSOCIATES, INC.**  
 POST OFFICE BOX 16085 JACKSON, MISSISSIPPI 39236  
 601-362-4886

DRAWING NO. TRCT-B-5